

BUILD-TO-SUIT
1510 GREENDALE RD • LEXINGTON, KY

FORTUNE
REALTY

COMMERCIAL REAL ESTATE

Relationships Built on Performance



BUILD TO SUIT- FOR LEASE

SQUARE FEET: +/- 121,000

ZONED: I-1

RATE: TBD / TRIPLE NET

- OPPORTUNITY FOR CUSTOM SPACE
- LANDLORD WILL DEMISE
- MULTIPLE DOCK AND DRIVE-IN DOORS
- ZONED I-1 INDUSTRIAL
- CONVIENENT ACCESS TO I-64/I-75 AND NEW CIRCLE ROAD



Amy Mellinger
C: 859.619.5369
Amy@FortuneRealty.com

859.293.1111
For more information, visit:
FortuneRealty.com

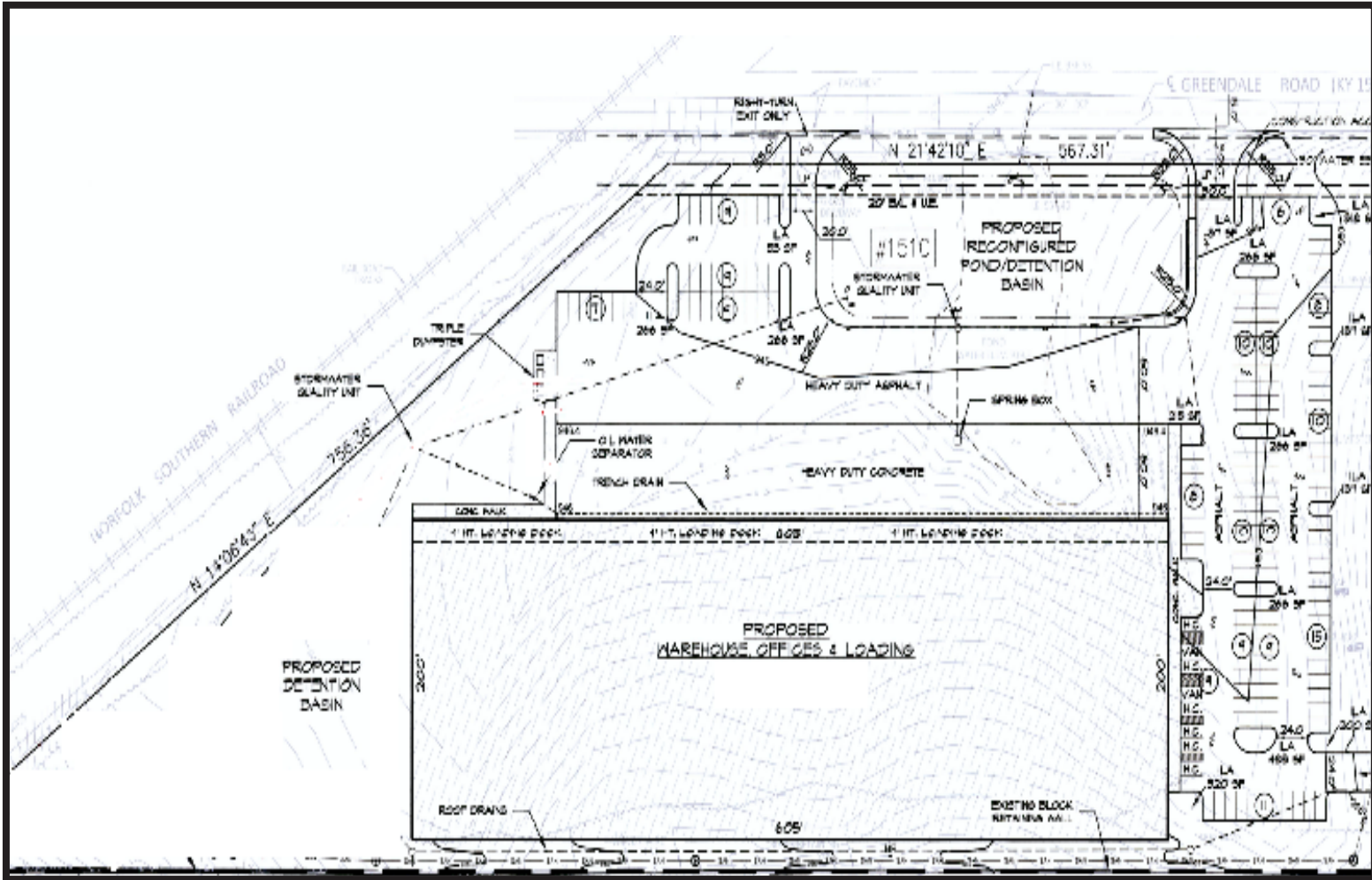
Liza van Dissel
C: 859.420.9238
Liza@FortuneRealty.com

BUILD-TO-SUIT
1510 GREENDALE RD • LEXINGTON, KY

**FORTUNE
REALTY**

COMMERCIAL REAL ESTATE

Relationships Built on Performance



Amy Mellinger
C: 859.619.5369
Amy@FortuneRealty.com

859.293.1111
For more information, visit:
FortuneRealty.com

Liza van Dissel
C: 859.420.9238
Liza@FortuneRealty.com

BUILD-TO-SUIT
1510 GREENDALE RD • LEXINGTON, KY

**FORTUNE
REALTY**

COMMERCIAL REAL ESTATE

Relationships Built on Performance



Amy Mellinger
C: 859.619.5369
Amy@FortuneRealty.com

859.293.1111
For more information, visit:
FortuneRealty.com

Liza van Dissel
C: 859.420.9238
Liza@FortuneRealty.com